

The Ritz-Carlton, Hong Kong



Banquet - ballroom foyer

Inspired by the dynamic culture of the city, the exquisite design of the Ritz-Carlton, Hong Kong reflects the meeting of East and West

Opening as the highest hotel in the world in March 2011, The Ritz-Carlton, Hong Kong offers design and style that are taken to new heights by LTW Designworks. The overall design theme of the hotel is inspired by the city's dynamic culture – a global metropolis at the crossroads of East and West and at the same time rich in entrancing local flavor.

Guests will first experience the hotel and the city by arriving at the hotel entrance on the 9/F. The porte cochere features the magnificent Hong Kong skyline as backdrop. A cool ocean of Palissandro blue marble stretches across the entire space and throughout the hotel. A dark wood entryway then leads guests through to the lift lobby that is counterbalanced with vivid orange onyx walls.

Throughout the hotel, modern interpretations of traditional Chinese fittings



Banquet - pre-function area

and art convey a distinctive style that is both familiar and inviting and that give the hotel a true sense of place in this magnificent city. To instill a sense of warmth and intimacy, and to demarcate areas in the larger public spaces, hand-tufted wool and silk 'cartographic pattern' carpets are used. With their jeweled blue-grey and earthy brown-yellow tones, the carpeted areas resemble parterres.

In just 52 seconds guests are transferred to the Lobby on 103/F. They will be amazed by an artwork that is an abstract depiction of a classic Chinese watercolor of running horses. The image is dissected into fragmented strips offering varied views of the artwork from different angles.

Occupying floors 106/F to 117/F, the 312 guest rooms and suites are styled with tailor-made precision to embrace the magnificent harbour and city view. Telescopes are available in all the suites for guests to enjoy the breathtaking views to their fullest. Behind the generous-sized bed is a silk-paneled wall and a leather headboard with metallic



Spa - reception



The Lounge & Bar

accents. Similarly, the TV wall is outfitted in leather and metal, featuring ‘baseball stitching’ as a design element. The room is tastefully decorated with Oriental accents – as seen in the floral motif of the carpet and the bright tangerine silk-lined interior of the ‘Chinese jewel box’ closet. The spacious bathrooms feature travertine marble floors and walls, and onyx countertops with double basins.

The Club Lounge located on the 116/F possesses an intimate, homey feel with the

use of soft lighting, modern classic furniture, and shelves that resemble suit cases. The dark Brazilian marble floor with its bold quartz inserts is juxtaposed by the gleaming white marble countertops delicately streaked with orange and grey. Other striking elements include the mirrored columns near the windows that are etched with a metallic-finished fretwork pattern. At night, the result is a subtle, glittering reflection of the dynamic city.

With its scintillating ‘diamond’ theme, the Diamond Ballroom located on the 3/F is a true gem. Radiating glamour, the ballroom is one of the largest in the city and is graced by a dazzling sea of chandeliers with crystals that seem to drip from the ceiling. Some of the wall panels feature cut-mirror effects that give sparkle to complement the theme of the ballroom. The color palette is an ephemeral glow of champagne and amber. To infuse this lavish space with chic comfort, some of the accent walls are clad in a lush cream fabric or textured leather, and outlined in dark marble. The grand lacewood doors that are fitted with cut crystal handles complete the setting.



Swimming pool



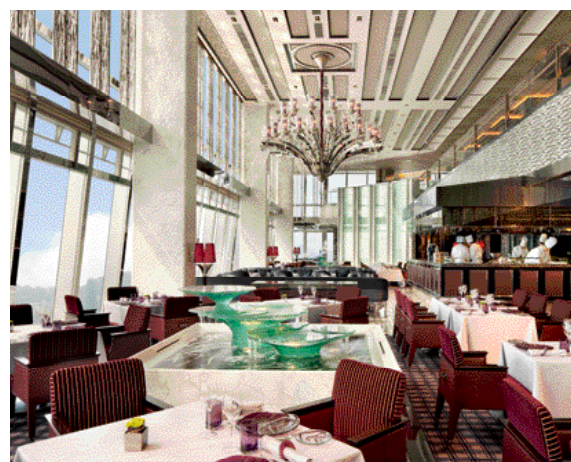
The Chocolate Library



Ozone - terrace



Lobby on 103/F



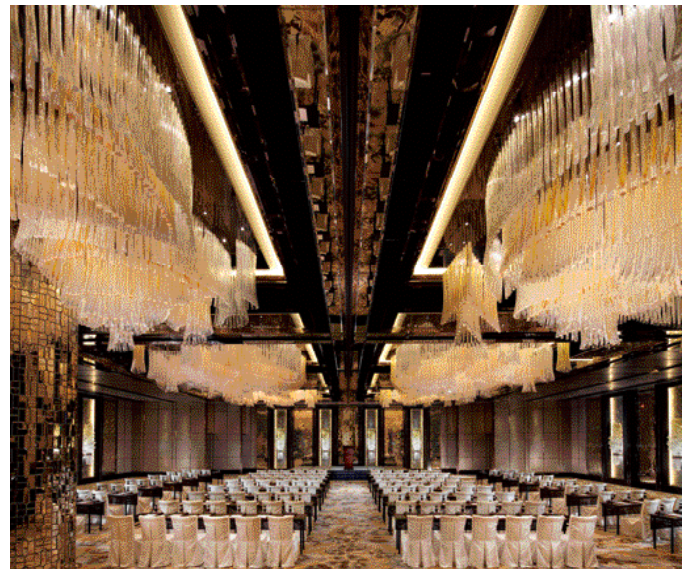
Tosca



Tin Lung Heen



Tin Lung Heen - private dining room corridor



Diamond Ballroom - meeting setup



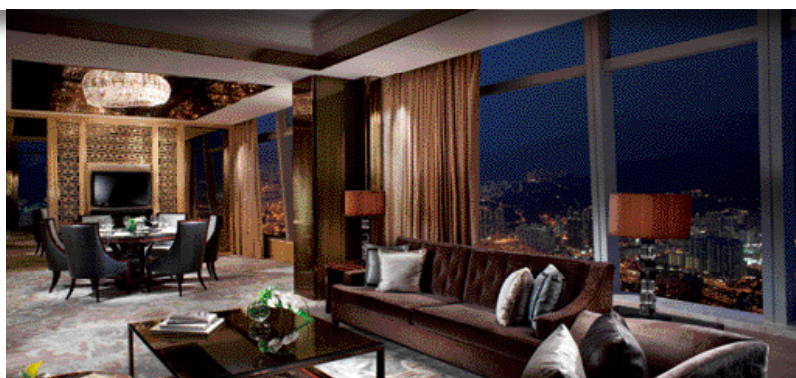
Tin Lung Heen - private dining room



Ritz-Carlton Suite - dining room



Ritz-Carlton Suite - bedroom



Speciality Suite - dining room



Ritz-Carlton Suite - living room



Ritz-Carlton Suite - bathroom

owner
Sun Hung Kai Properties

hotel management
The Ritz-Carlton Hotel Company, LLC

architects
Kohn Pedersen Fox Associates PC (New York)
Wong & Ouyang (Hong Kong) Ltd

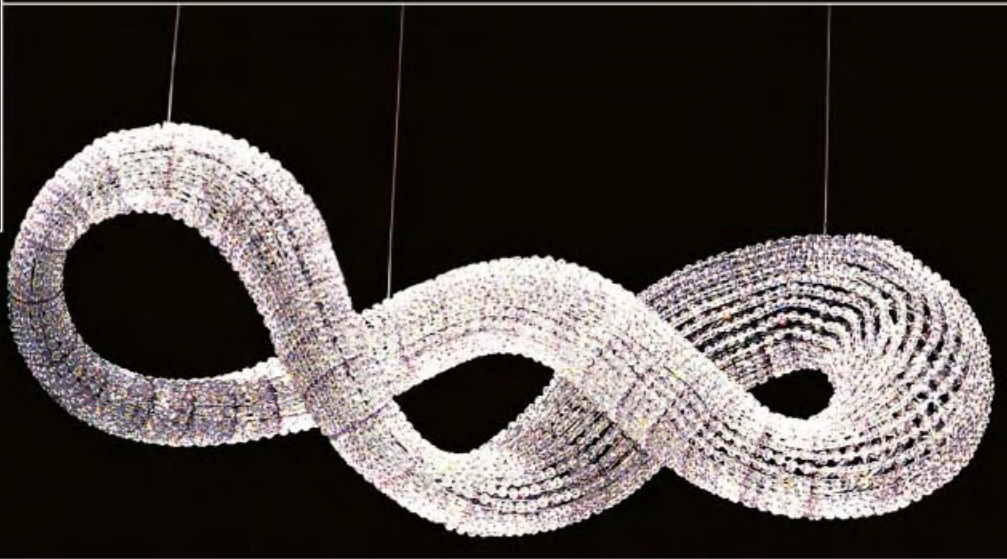
interior designers
 Public Areas, Rooms & Suites:
LTW Designworks (Singapore)
 Restaurants & Bars:
SPIN Design Studio (Japan) and Wonderwall (Japan)

About The Ritz-Carlton, Hong Kong

Occupying floors 102 to 118 of the International Commerce Centre in Kowloon, The Ritz-Carlton, Hong Kong offers 312 guest rooms all providing spectacular city and harbour views. With six dining venues starting on the 102/F, including state-of-the-art designer Chinese and Italian restaurants, and lobby lounge, the rooftop bar are a truly stunning venue at 490 meters above sea level. The Ritz-Carlton Spa by ESPA located on 116/F features nine deluxe treatment rooms and two couples' suites. The hotel also features a fully equipped fitness centre and an indoor pool on the 118/F with a 28m x 7m LED screen on the ceiling. The Ritz-Carlton, Hong Kong also boasts one of the largest ballrooms in the city at 930 sq m.



Crystal Bloom by Swarovski®



MINI VOYAGE by Swarovski® Crystal Palace



MADISON by Swarovski®



ATLAS by Swarovski®



CRYSTAL EMPIRE by Swarovski®



EYRIS by Swarovski®



MOSAIX by Swarovski®

Aigle Crystal Decor

愛家水晶裝飾有限公司
Aigle Crystal Decor Limited

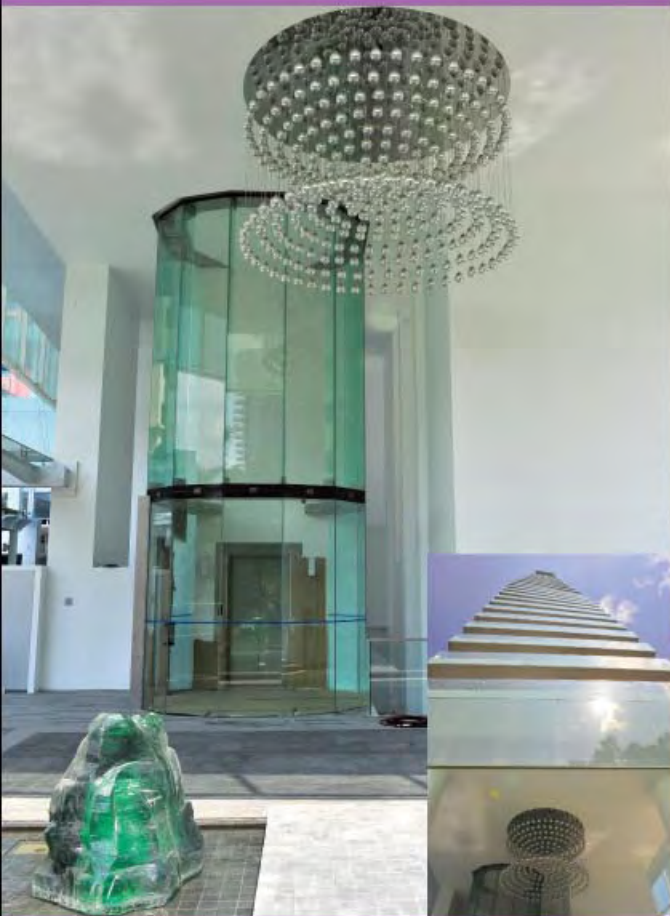
施華洛世奇元素特約夥伴店
SWAROVSKI® AUTHORIZED LIGHTING PARTNER



SWAROVSKI®
Elements

Studio M Hotel

Singapore



Lumos

At No.9 Leonie Hill
Singapore

Lohas Park

TKO, Hong Kong



Hyatt Regency Hong Kong

Tsim Sha Tsui



Situated in the heart of Tsim Sha Tsui business and tourist district, Hyatt Regency Hong Kong, Tsim Sha Tsui is part of the prestigious mixed-use retail and residential complex K11 on Hanoi Road, which includes the six-storey K11 Art Mall. The hotel offers direct access to the Tsim Sha Tsui and East Tsim Sha Tsui MTR stations located within the building.

The hotel's 381 comfortably appointed guestrooms and suites command spectacular views of Victoria Harbour, Hong Kong Island or Kowloon. The Regency Club guest rooms, private lounge and meeting venue are located from levels 22 to 24 where floor-to-ceiling windows provide panoramic views.

Hyatt Regency Hong Kong, Tsim Sha Tsui features 530 square metres of event space on the lobby level, including a ballroom and five meeting venues. The pillarless Regency Ballroom, occupying 335 square metres, can accommodate up to 400 guests with its perfect shape and can be easily partitioned into two meeting venues. It is well-equipped with three built-in screens, the latest technology and communications support as well as wireless Internet connectivity.

In addition, the hotel has three



Swimming Pool



Regency Ballroom – Theatre Setup



Regency Ballroom – Deluxe Private Dining



Regency Club Lounge



Regency Suite Harbour View



Regency Executive Suite



Chin Chin Bar

restaurants and bar, including Hugo's, a classic fine-dining European restaurant located on the lobby level. Cafe, located adjacent to Hugo's on the lobby level. The Chinese Restaurant, located on level three, combines modern art deco design blended masterfully with the essence of a traditional 1920s' Chinese tea house.

Also on level three, the comfortable, cosy Chin Chin Bar is a lounge bar with Chinese style decor and an outdoor terrace.

The hotel's 24-hour fitness centre and outdoor heated swimming pool are located on level ten and eight respectively to provide a wonderful escape from the hustle and bustle of the city.



Chin Chin Bar – outdoor terrace



Cafe



Salon III & IV – U-Shape Setup



The Chinese Restaurant



Presidential Suite – Bedroom



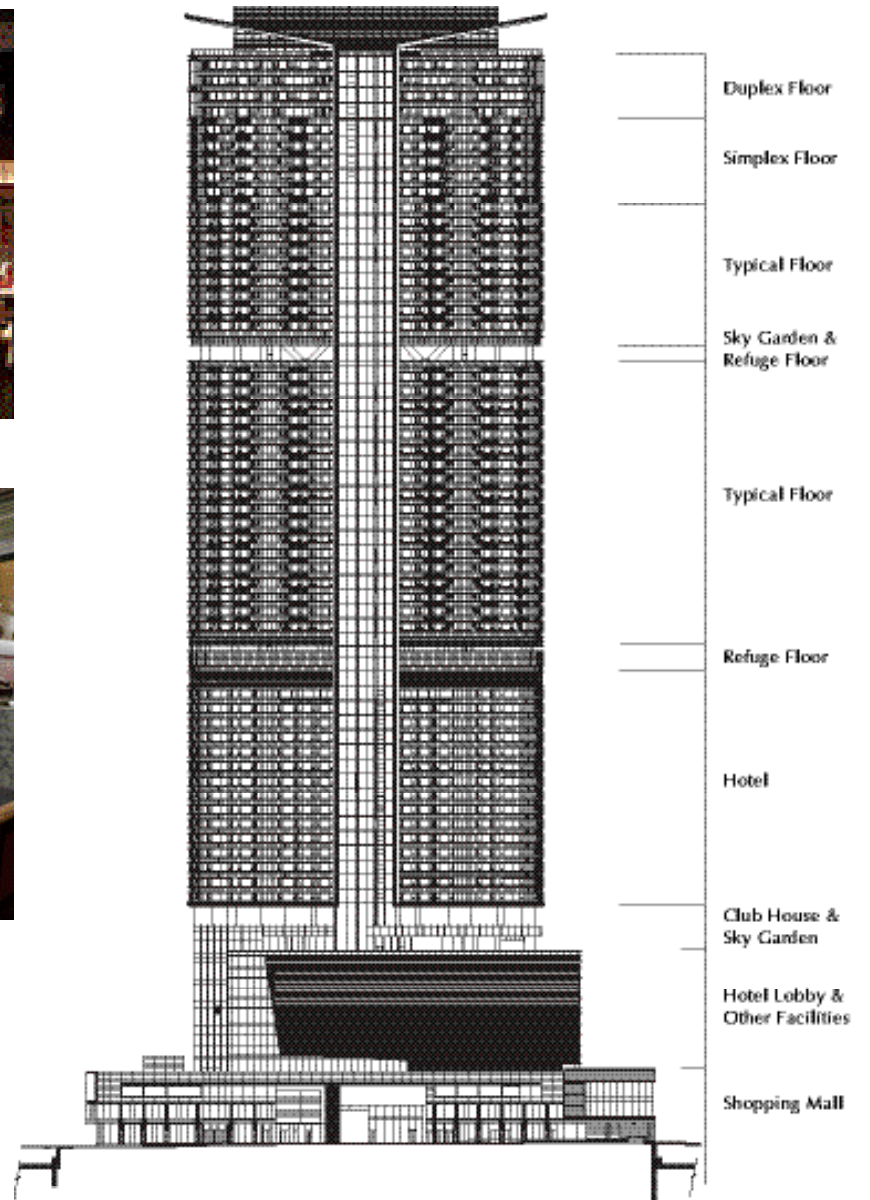
Presidential Suite – Living Room



Hugo's



Hugo's Private Room



Hyatt Regency Hong Kong

Sha Tin

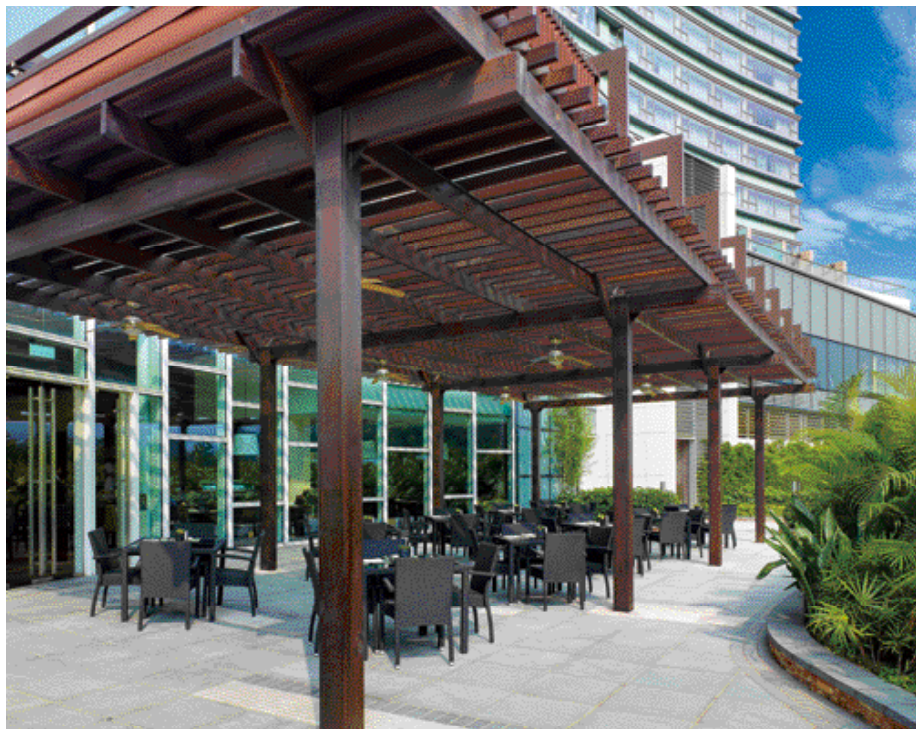




Situated next to The Chinese University of Hong Kong and conveniently located at University MTR station, the hotel offers direct access to central business districts and the border to China via the MTR rail.

The hotel features 434 hotel rooms and suites, and 133 specially-designed suites for extended stay, all commanding views of Tolo Harbour, Kau To Shan and Sha Tin Racecourse. Renowned interior designer Steve Leung utilised timeless, natural materials such as stone and wood, and devised a nature-inspired colour palette to complement the surrounding environment.

The hotel features a variety of meeting and event venues. The Regency Ballroom with an exceptionally high ceiling, separate entrance and driveway, can accommodate a maximum of 30 banquet tables. The Salons event venues of different sizes are connected to the expansive outdoor terrace. Nine



Cafe – outdoor terrace



Lobby



Sha Tin 18 Dessert Kitchen

boardroom-style meeting rooms on high floors of the hotel offer calming mountain views.

Hyatt Regency Hong Kong, Sha Tin is home to five restaurants and bars, all contemporary in design and offering exceptional dining experiences.

The Sha Tin 18 Chinese restaurant, Café, Pool Bar, Tin Tin Bar and the Sha Tin Apple Pie Patisserie offer a variety of food and meals.

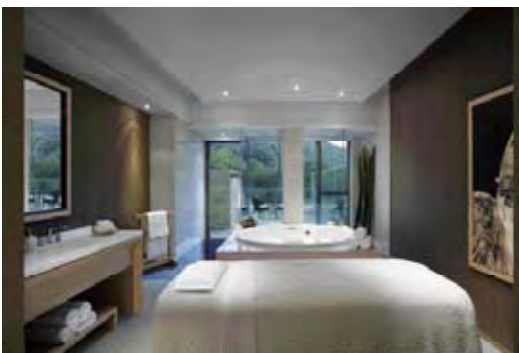
Melo Spa offers pomelo-inspired treatments at nine luxurious all-inclusive treatment suites; while Melo Moments can host up to 12 persons for spa parties and group sessions. Other recreational facilities include a 25-metre outdoor heated swimming pool and whirlpool, fully equipped Fitness Centre, tennis court, sauna and steam, mountain-bike rental, and Camp Hyatt for children.



Regency Ballroom



Regency Executive Suite Living Room



Melo Spa



Cafe

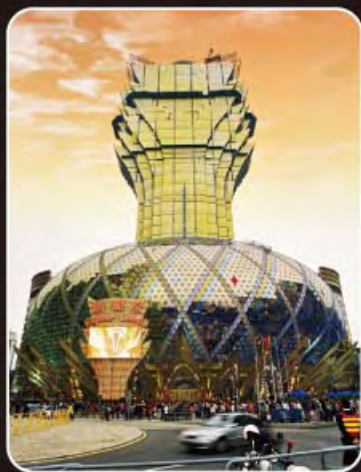
KLINGENBERG

Tiles from Germany

TECHNICA® — UNGLAZED VITRIFIED CERAMIC FLOOR TILES
NO MORE SLIPPERY FLOORS



Job Reference



Grand Lisboa Hotel



City of Dreams



Harbour Plaza 8 Degrees Hong Kong



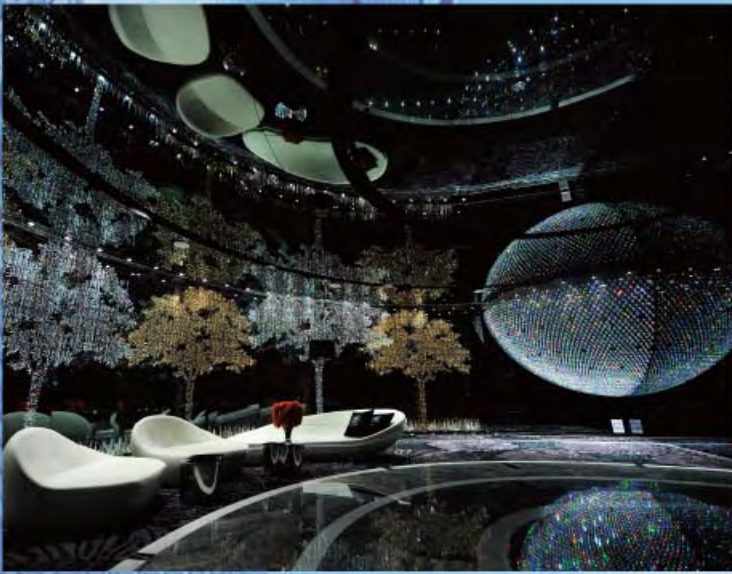
美意建材(國際)有限公司
BUONA IDEA BUILDING MATERIALS (INT'L) LIMITED

香港九龍觀塘開源道55號開聯工業大廈B座606室 Rm 606, Block B, Hoi Luen Ind. Centre, 55 Hoi Yuen Road, Kwun Tong, Kowloon, H.K.
電話 Tel: (852) 2543 4243 傳真 Fax: (852) 2543 0408 電郵 Email: buonaid@netvigator.com

www.buonaidea.com.hk

Festival City Phased 2

Sales Office



The Gloucester

Sales Office



Yoho Midtown

Clubhouse

Marinella

Sales Office



Specialist of Lighting Project in the Hotel, Luxury Residence & Clubhouse



興發燈飾國際有限公司

Hing Fat Lighting International Limited

Unit 01, 1/F, Block C, Sea View Estate, 8 Watson Road, North Point, Hong Kong

Tel: (852) 2979 0063 Fax: (852) 2979 0991

Website: www.hf.com.hk

E-mail: info@hf.com.hk



The Masterpiece
名鑄



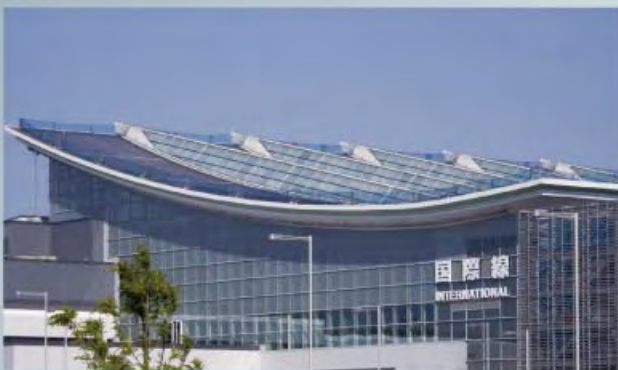
International Commerce Centre
環球貿易廣場



C-Bons International Center -
Millennium City 7
絲寶國際大廈 - 創紀之城七期



Wellmark, Iowa, USA



東京國際空港旅客ターミナルA・B工

Established in 1998, **AMC Limited** is a specialist curtain wall fabricator and metal coating applicator in the fields of architectural industry. Headquartered in Hong Kong, AMC has experienced tremendous growth in the past decades with two modern factories totaling 800,000 square feet in Xiegang Town, Dongguan, China.

Our products include unitized curtain wall system, aluminum curtain wall panels, custom made ceiling panels, aluminum louvers, window frames and partitions. With over decades of experience in manufacturing and exporting to high end markets like Japan, US and Hong Kong, we are confident that our high quality products can meet every customer's requirement.

At AMC, we have a team of experts to provide free consultation service to our customers, including design, distribution, engineering, custom fabrication, metal coating and after-sales service. Together with advance production facilities and techniques, AMC is capable to meet the stringent requirements of customers in both quality and quantity.

東莞東盛金屬噴塗有限公司/東莞謝崗東和金屬製造噴塗廠成立於1998年，是一家專業從事幕牆五金及金屬噴塗加工之港資企業。隨著業務之急速發展，公司規模經逾十年不斷擴張，現位於東莞市謝崗鎮之生產基地，設有多組先進之自動化生產線，總面積共八十萬平方呎。

東盛產品包括玻璃幕牆單元式組件、幕牆鋁單板、金屬天花、鋁百頁窗及鋁合金窗框等等。公司產品遍及世界各地，包括日本市場、美國市場和香港市場。憑著對市場和產品的高端定位，產品質量必定能滿足所有客戶的要求。

東盛擁有專業工作服務團隊，為客戶提供各種服務，包括圖紙設計、鈹金加工、噴塗加工、幕牆組裝、裝箱運輸、免費諮詢和售後服務等。加上先進之生產設備及創新的技術，東盛無論在工藝和質量上，在行業上均一致獲得客戶的好評。

AMC Limited
東莞東盛金屬噴塗有限公司

Room 2, 6/F, Mega Trade Centre, No. 1 Mei Wan Street, Tsuen Wan, N.T. Hong Kong

香港新界荃灣美環街1號時貿中心6樓2室

電話 Tel: (852) 2636 0636

網址 Website: www.amclhk.com.hk

傳真 Fax: (852) 2636 0393

電郵 E-mail: marketing@amcltd.com.cn

CREATING BETTER ENVIRONMENT

At Jepsen Building Products, we understand environmental awareness is driving our clients' choices. This is why we are constantly sourcing diverse eco-friendly landscape products with green credentials from all around the world. So whatever your budget or concern, you can be sure of making the right choice.

- Sustainable Materials
- Recycled Materials
- Reduce Carbon Footprint

To find out more about our eco-friendly landscaping products, please contact us.

jepsenbuildingproducts.com

Kwun Tong Promenade, Hong Kong

A member of the Jepsen Group • CONSUMER | INDUSTRIAL | BEVERAGE | LUXURY • Mainland China | Hong Kong | Macau | Taiwan

捷成集團成員 • 消費品 | 工業 | 飲料 | 奢侈品 • 中國大陸 | 香港 | 澳門 | 臺灣



Jepsen Building Products Limited 捷成建築產品有限公司

Enquiry 查詢: (852) 3180 3330 Email 電郵: jepsenbuildingproducts@jepsen.com

LEISURE SPECIALIST



Hot & Cold Pool



Gymnasium Equipment



Spa Pool



Solarium



Swimming Pool



Infrared Sauna

120(L)x100(D)x190(H) cm

106(L)x100(D)x196(H) cm



Sauna Room



Steam Bath Room



Snooker Table

專業營造及供應

- 紅外線桑拿
- 桑拿浴室
- 蒸氣浴室
- 水力按摩浴缸
- 冷熱水池
- 泳池設備
- 酒店、會所設備
- 各類浴室設備
- 美容、健身房設備
- 桌球室設備

Contractor & Supplier for:

- Infrared Sauna
- Sauna Room
- Steam Bath Room
- Jacuzzi / Spa Pool
- Hot & Cold Pool
- Swimming Pool
- Hotel & Club House Equipment
- Sanitaryware Equipment
- Gymnasium Equipment
- Snooker & Solarium



勁飛國際貿易公司
Kenfe International Trading Company
勁飛工程公司
Kenfe Engineering Company

香港葵涌梨木道32-50號金運工業大廈二期3樓B室

3/F, B, Phase 2 King's Win Industrial Building, 32-50 Lei Muk Road, Kwai Chung, N.T., Hong Kong

Tel: (852) 2555 9011 Fax: (852) 2873 5039 E-mail: rooty_kenfe@yahoo.com.hk

The WORLD of MAPEI 馬貝集團

馬貝集團在1937年創建於義大利米蘭，是當今世界建築工業用化工產品，特別是瓷磚及石材膠黏劑生產領域的引領者。

馬貝自60年代開始進行業務國際化，積極拓展全球業務，務求滿足各地市場的需求；盡力降低產品運輸成本。

馬貝集團在全球設立69所子公司，並於5大洲的27個國家設立58間工廠，通過拓展各地的子公司，建立一套完善的銷售與技術支援網路，深受建築師、工程師、承建商及發展商的青睞。

Founded in Milan in 1937, Mapei is today's world leader in the production of chemical products for building, especially adhesives for ceramics and stone materials.

Starting in the 1960's, Mapei put its strategy of internationalization into action in order to have maximum proximity to the needs of local markets and reduction of shipping costs to a minimum.

The Group now counts 69 subsidiaries with 58 production facilities in operation in the 5 continents in 27 different countries. Furthermore, Mapei has developed a sales and technical service network with offices all over the world and offers an efficient Technical Assistance Service that is much appreciated by architects, engineers, contractors and owners.

15 大產品系列 / 15 PRODUCT LINES



瓷磚和天然石材
黏貼安裝材料

**PRODUCTS FOR
CERAMICS AND
STONE MATERIALS**



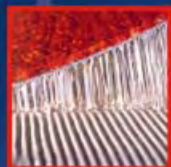
建築及建設施工產品

**PRODUCTS FOR
BUILDING**



防水施工產品

**PRODUCTS FOR
WATERPROOFING**



彈性和紡織材料
安裝材料

**PRODUCTS
FOR RESILIENT AND
TEXTILE MATERIALS**



磚石及古蹟結構修復材料

**PRODUCTS FOR THE
REPAIR OF MASONRY**



地下及隧道工程結構材料

**PRODUCTS FOR
UNDERGROUND
CONSTRUCTIONS**



木地板安裝產品

**PRODUCTS
FOR WOODEN FLOORS**



結構性加固補強材料

**PRODUCTS FOR
STRUCTURAL
STRENGTHENING**



混凝土和砂漿外加劑

**ADMIXTURES
FOR CONCRETE**



水泥和樹脂
地台材料

**PRODUCTS FOR
CEMENTITIOUS
AND RESIN FLOORING**



彈性密封膠和膠黏劑

**ELASTIC SEALANTS
AND ADHESIVES**



水泥助磨劑

**GRINDING
AIDS FOR CEMENT**



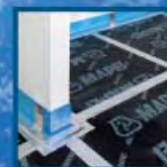
牆面保護和裝飾塗料

**WALL PROTECTIVE
AND DECORATIVE
COATINGS**



保溫隔熱產品

**PRODUCTS FOR
THERMAL INSULATION**



隔音產品

**PRODUCTS FOR
ACOUSTIC INSULATION**

Mapei China Ltd. 馬貝中國有限公司

9/F Linkchart Centre, 2 Tai Yip Street, Kowloon, Hong Kong
香港九龍觀塘大業街2號聯卓中心9樓

Tel: (852) 2148 6816

Fax: (852) 2512 1328

Website: www.mapei.com.hk

Enquiry: mapei@mapei.com.hk

馬貝
MAPEI

Acoustic, Smoke and Fire Containment for Door Assemblies



Lorient design and manufacture a wide range of high quality sealing systems for door assemblies. With over 32 years in the industry Lorient sets the standard for performance, technical excellence and innovation.

Lorient Pacific holds extensive stock offering flexibility and choice. Products are supported by substantial test evidence and third party accreditations. Both test reports and expert advice are available from our helpful team. The product range includes:

- Acoustic, Smoke & Fire Seals
- Fire Resistant Glazing Systems
- integrity® Architectural Seals
- Fire Resistant Damper/ Air Transfer Grilles
- Fire & Smoke Resistant Door Hardware
- Fire Resistant Mastic



Grand Lisboa Hotel & Casino (Macau)



The Beverly Hill



Queen Mary Hospital



The Matilda Hospital

Panasonic
ideas for life



FSV NEW VRF System

Large capacities
up to 60HP

Connection
capacity ratio :
50%-200%

Up to **64**
indoor units connectable !*



Compact Design :
Single outdoor unit
up to 20HP*



Outdoor unit
static pressure
up to 80Pa



RENEWAL
R22

Can re-use R22 pipe while
installing R410A system.

* Maximum number of indoor units depends on outdoor unit capacity.



SHUN HING ELECTRIC WORKS AND ENGINEERING CO., LTD.

Tel : 2861 2767 Fax : 2865 6706 www.shew.com.hk

Maintenance and Repair Service

SHUN HING ENGINEERING CONTRACTING CO., LTD.

Tel : 2419 8282 Fax : 2419 8234 www.shecon.com

Greener city with green tiles

Every city is a concrete jungle. Have you ever thought of exterior wall tiles can let building carry out photosynthesis and become a real “tree” purifying the air in city?

TOTO, a well-known sanitary wares manufacturer, developed a patented tile technology with Tokyo University called Hydrotec. This technology offers exterior wall with air purification and self-cleaning functions.

Air Purification

The effect is based on the principle of the photocatalysis: The catalyst titanium dioxide fired onto the glaze surface of tile provides a reaction between light, oxygen and air humidity. In this process, it activates oxygen forms and decomposes the exhausted

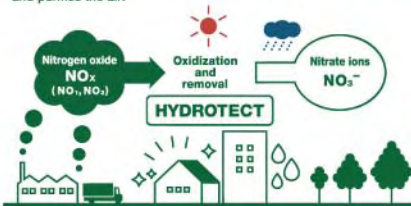
fume created by industries and cars. Scientific analyses prove that a Hydrotec façade surface of 1,000m² cleans the air as effectively as 70 medium-sized Deciduous Trees.

Self-Cleaning

Hydrotec-coated tile surfaces are with high hydrophilicity. Tile surfaces absorb water molecules in the air to create a very thin water film. In this way, dirt is adhered on the water film but the tile surface. Thus dirt can be washed down by rainwater easily. Buildings with Hydrotec tiles will look always new.

Air purification mechanism

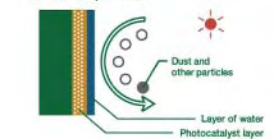
Removes pollutants in the air (NO_x) through a photocatalytic reaction and purifies the air.



* NO_x is oxidized and converted into nitrate ions. The nitrate ions are washed away when it rains.

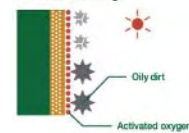
Self-cleaning mechanism

Reduces adsorption of dust and other particles



The layer of water reduces adsorption of dust and other particles through static electricity.

Helps stop oily dirt from sticking



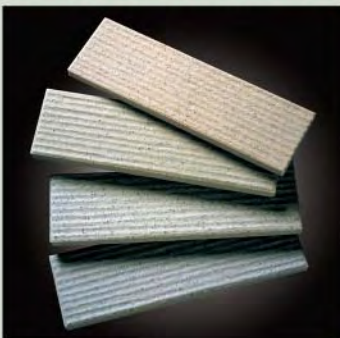
Activated oxygen decomposes dirt clinging on the surface and helps prevent it from sticking.

Harnessing the power of the rain to wash surfaces



Rainwater gets in under dirt, lifting it off of the surfaces and washing it away.

Example of the exterior tiles:



YAMANOTE series



INIZIO series



Minimum care with maximum effect

Minimum care means low cleaning cost. The dirt is easily removed with rainwater. It significantly reduces the use of toxic detergents and chemicals. Together with air purification function, the tiles act like leaves grew on the building and kept purifying air in the city.

TOTO has promoted green building for many years and supplied some significant projects with Hydrotec exterior tiles in Hong Kong. Such as Harbour One, sited in the Island West, is one of the luxurious residential properties of Emperor Investment Limited. As long as more buildings using Hydrotec tiles, it will soon transform the city into a real “concrete jungle”.

For more information:
TOTO (H.K.) Ltd.
Tel: (852) 2861 3177

*Now I can...
even our Baby*



Effective decompose nearly **100%** harmful formaldehyde!

- Interior Formaldehyde Abatement
- Virtually no odour, low VOC
- Good washability (40,000 times)
- Super waterproof
- Cover hairline cracks
- Excellent anti-fungus
- Excellent durable
- Stain resistance
- Alkali resistance
- Anti-bacterial
- Excellent hiding power
- Soothes rough surface
- Quick drying time
- Matt Finish & easy application
- Computerized color matching



Nippon Paint
Gold Formaldehyde-Buster
Odour-less All in One
(Bamboo Charcoal technology)



NIPPON PAINT (H.K.) CO., LTD.

Unit 509-515, 5/F, Trade Square, 681 Cheung Sha Wan Road, H.K.
Tel: (852) 2699 9333 Fax: (852) 2602 8844

Email: np@nipponpaint.com.hk Website: www.nipponpaint.com.hk

A MEMBER OF THE NIPSEA GROUP



Nippon Paint Hong Kong

